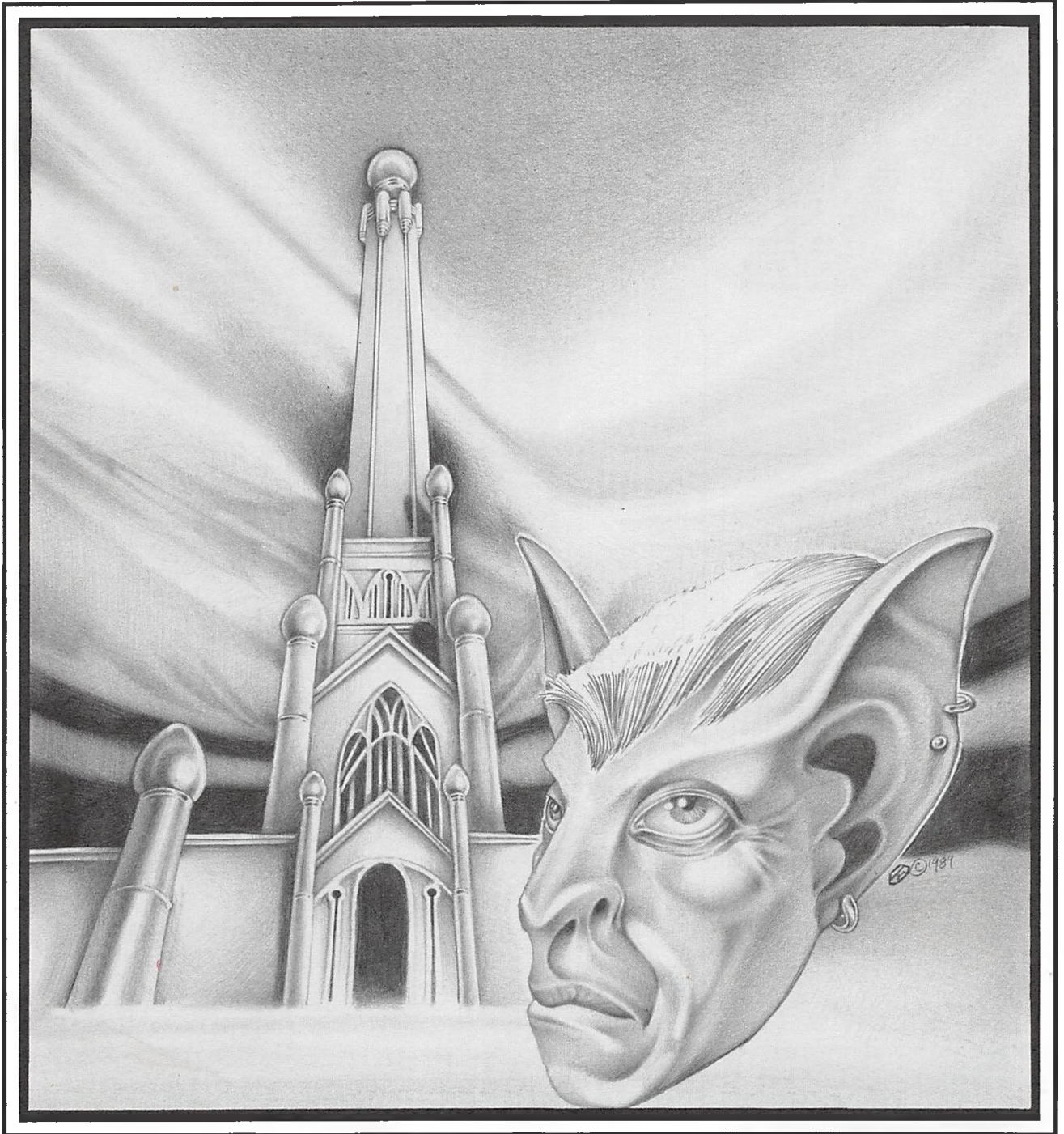
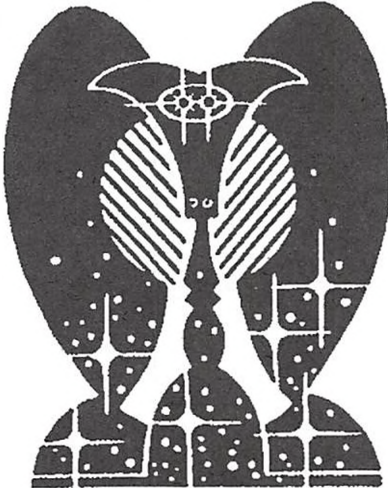


ChiconV

Progress Report One



Progress Report One April 1989



How To Contact Chicon V

For **Registration** matters only,
write us at:

CHICON V
ATTN: Larry Smith, Registrar
P. O. Box 218121
Upper Arlington, OH 43221-8121

Please send **all other inquiries** to:

CHICON V
ATTN: (please be specific)
P. O. Box A3120
Chicago, IL 60690-3120

Note: If you have specific
questions for the Art Show,
Dealers' Room, or any other
Department which has published
a special address, please contact
that department directly for the
fastest response.

© Chicon V is a registered Service Mark of
Chicon V, Inc. Worldcon, World Science
Fiction Society and Hugo Awards are Service
Marks of the World Science Fiction Society, an
unincorporated literary society.

BROUGHT TO YOU BY

President & Chairman
Vice President - Administration
Vice President - Exhibits
Vice President - Facilities
Vice President - Finance
Vice President - Functions
Vice President - Program
Vice President - Services
Secretary
Treasurer
Counsel

Administration
Division Manager

Exhibits
Division Manager
Art Show & Auction
Print Shop
Dealers' Room
Assistant
Traffic
Traffic
Staff

Con Suite
Assistant

Facilities
Committee-Hotel Liaison

Finance
Division Manager
Asst. Div. Mgr. & Asst. Treasurer
Accountant
Controller
Deputy Treasurer
Deputy Treasurer
Security Coordinator

Media
Films

Members
Division Manager
Registrar

Office
Division Manager
Mail Handling

Programming
Division Manager

Publications
Division Manager
General Editor
Editorial Assistants

Kathleen Meyer
Larry Smith
Leonard Wenshe
Ross Pavlac
Bob Beese
Marie Bartlett-Sloan
Debra Wright
Mike Jencevice
Sally Kobee
Al Ballard
Cathy FitzSimmons

Larry Smith

Alice Bentley
Elizabeth Pearse
Larry Tagrin
Steve Francis
Steve Poe
Jeff Lockridge
Kim Lockridge
David Francis
Mick Hamblen
Julee Johnson-Tate
Jay King
Ann Miesel
Marie Miesel
Roseanne Packer
Gary Plumlee
Dennis Reed
Wanda Reed
John Donat
Chuck Bradford

Ross Pavlac

Al Ballard
Robert Shall
Alexia Hebel
Bob Beese
Van Siegling
Cecelia Byars
Curt Clemmer

Allan Sperling

Larry Smith
Larry Smith

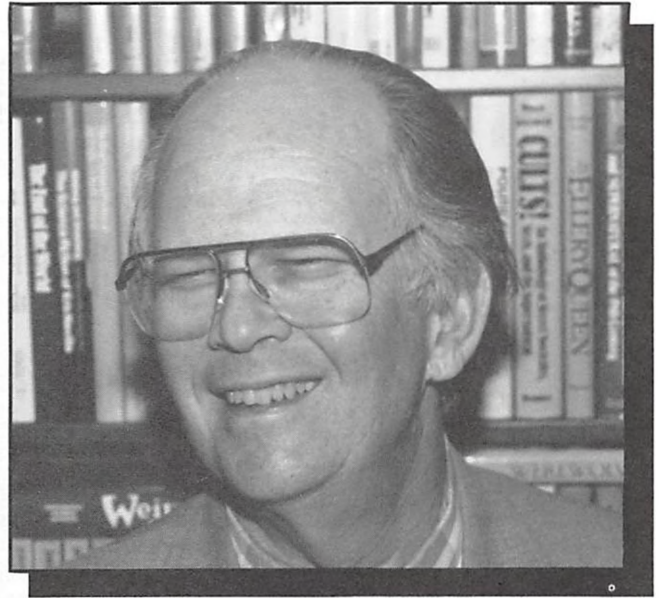
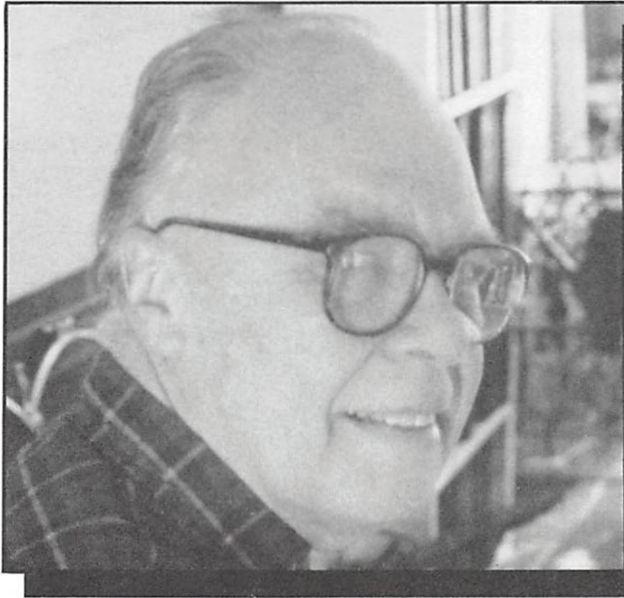
Brendan Lonehawk
Roberta Jordan

Cathy FitzSimmons

John Ayotte
John Ayotte
Bob Gaines
Larry Smith

(There are obviously many more Departments (and a few Divisions) that aren't mentioned in this list. As they are staffed, they will show up.)

GUESTS OF HONOR



AUTHOR:
Hal Clement

EDITOR:
Martin H. Greenberg

ARTIST: Richard Powers

FAN: Jon & Joni Stopa

TOASTMASTER: Marta Randall



MEMBERSHIP INFO

Your Mailing Label

The first line of your mailing label shows your membership number and status (an 'A' indicates an Attending Member, an 'S' means Supporting). Enclosed in curly braces ({}) is the name we will use on your name tag. The six-digit block of numbers indicates the last time your membership record was updated .

A brief word about "badge names": You can tell us anything to place in this area within these limits - it must be shorter than 30 characters including spaces, and it must not violate normal standards of good taste or decency. If we are fortunate enough to have computer-set name badges for Chicon V, the "badge name" field is what we will send to the printer. Chicon V maintains your real name and correct address so that we can find your records consistently, and to assist the USPS.

If any of the data on your mailing label is incorrect, please let us know as soon as possible. If you don't get a copy of something that all of your friends have received, it's probably because you've moved and not informed us. All of our mailings except the final PR will be sent Bulk Rate, so the Postal Office will not tell us if you've moved. You should also remember that the Change of Address/forwarding order you file with the Post Office is only good for one year, unless renewed at your original Post Office.

There are two classes of Worldcon membership - Attending and Supporting. Attending members get copies of publications, the rights to nominate and vote for the 1991 Hugo Awards, and (with payment of additional fees) the right to vote for the site of the 1994 Worldcon. Most importantly, they also get to show up and participate. Supporting members get all of the above except, of course, the opportunity to attend our convention.

Full Attending Memberships are \$75 each until 31 December 1989. Rates for 1990 and 1991 have not yet been set.

Supporting Memberships are \$20 each until 31 December 1989, and no determination on future increases has been made. Supporting Memberships may be converted to Attending at any time up to 15 July 1991 by paying the difference between the fee you paid Chicon for your Supporting Membership and the current Attending fee.

Children's Memberships (a child is defined as any person who will be 1 or younger as of 29 August 1991) come in three types:

A: A child may acquire a regular Attending membership at the current rate and will receive all of the normal privileges of membership. They will not also be entitled to child-care services provided by Chicon V.

B: A child-care membership is available for \$75 until 15 July 1991. Only children with child-care memberships will be able to use Chicon V child-care services, and these memberships will not be sold at the con. Child-care members will not receive publications, nor will they be allowed to vote.

C: Registration for kids-in-tow will be available at any time at no charge, but these children must be accompanied by a responsible adult whenever they are in Chicon V function areas. They will not receive publications,

will not have voting rights, and will not be entitled to Chicon V child-care.

{ Whenever fees are mentioned in Chicon V publications, we are referring to amounts in United States dollars. }

General Information

The postmark date on your membership payment envelope will be considered the official date of payment and will determine how much you owe us. Please mail your memberships well before any deadlines to avoid postal delays.

All checks must be made payable to "Chicon V", must be in US currency, and must be drawn on a US (or Canadian) bank. Foreign-bank checks incur incredible handling fees which Chicon V cannot absorb. We can accept Postal Money Orders without penalty, so long as they are payable in US dollars.

Any check returned to Chicon by our banks, for any reason, will have a service charge (currently \$15) added to the draft amount to cover our processing expenses. Chicon V will contact the writer of a returned check once; if we do not receive a reply to that letter, your payment will be treated as though it had never been sent to us.

In the event of any dispute over payment, the burden of proof rests with the member, so please retain your cancelled checks as your receipts. Chicon V will endeavor to acknowledge each membership or other payment as it is received; if you don't hear from us within six weeks, please write again and remind us that you sent money and would like a response.

All mail related to registration must be sent to the Chicon V registration address:

CHICON V
ATTN: Larry Smith, Registrar
P.O. Box 218121
Upper Arlington, OH 43221-8121



FUNCTIONS & ACTIVITIES

Chicon V has signed the formal facilities contract with the Hyatt Regency Chicago, which will be our primary hotel. The Hyatt, which hosted Chicon IV in 1982, contains 2041 sleeping rooms (1700 of which are blocked to us) and more than 210,000 square feet of function space.

The best news about the contract signing is the room rates. Are you ready? How would you like to pay only \$70/night for a single or double room? We thought you would. The triple/quad rate is not quite as good a bargain, unfortunately—\$90 triple and \$110 quad. Of course, suites will also be discounted, e.g., a Park Suite which normally rents in 1989 for \$1000/night will be \$380/night for Chicon V.

These are not just *estimated* rates that are subject to inflation: the Hyatt has guaranteed these rates to us for 1991, and they will be effective for con members staying anytime between August 16 and September 9, 1991.

Please don't try reserving your rooms now; there are plenty to go around. A full rate schedule and hotel reservation card will be sent out with a progress report in late 1990 or early 1991.

Parking in the Hyatt garage will be 1/2 of whatever the 1991 price is (currently, rates are \$14/night).

For groups planning on throwing parties, the Hyatt has agreed to waive corkage provided that certain conditions are met. Details will appear in future progress reports. And yes, we will be having "party floors" and "quiet floors."

We are currently negotiating overflow space for sleeping rooms. Info on overflow space will appear when a contract is signed.

If you have any questions about the hotel, please write to Ross Pavlac, Chicon V Facilities Liaison, at our Chicago P.O. Box.

Ross Pavlac

Facilities

The display area will be in Wacker Hall, located on the lowest level of the East Tower of the Hyatt Regency Hotel.

There will be approximately 350 panels available for hanging flat art work, some 50 tables for 3D pieces, supports for free-hanging art, floor space for large standing items and for artists who have their own display stands, and walls for those who hang that way.

Prices cannot be set until we are closer to '91, but we will certainly keep them as low as possible. Artist information will be mailed out in January '91, and registrations will be accepted until May 31 of that year.

Artists may write for information and their names will be kept on file until the mailing date.

Chicon V Art Show
Elizabeth Pearse
218 All Saints Cres.
Oakville, Ont., L6J 5M9

Chicon V Print Shop
Larry Tagrin
1024 Wall Road
Keller, TX., 76248

Art Show



FUNCTIONS & ACTIVITIES

Con Suite

Oh, boy. Here we go again!!

It's really too early to have any specific details about the Chicon V Con Suite, except:

1. We will be in the Belmont room, just as we were for Chicon IV.
2. We will have the usual come-tibles that you have come to expect from a Chicago con, and maybe some real surprises (I'm working on them).
3. This will be a real party Con Suite,

in the tradition of all good midwestern cons.

4. We will be open very late, but who knows (at least for now) how late or how early we will be open.
5. There is no five.
6. We Need Help! (I know that.) Seriously, folks, we need lots of people to help us run the Con Suite. If you can help, drop us a line at the Chicago P.O. Box, and let us know what you want to do.

John Donat

Dealers' Room

Deposits for tables and booths in the Chicon V Dealers Room will be accepted beginning September 5, 1989, immediately following Noreascon 3. All deposits received before that time will be returned to the senders. Deposits will not be accepted in person at Noreascon 3.

All reservations for Dealers Room space postmarked between September 5, 1989 and October 2, 1989 will be handled as if they had been postmarked on October 2nd. Priority numbers will be assigned at random from this group of reservations. All subsequent reservations will be handled by postmark, in chronological order.

All potential dealers on our mailing list will receive the next Dealers Room update bulletin when it is published. It will contain information on the number of tables and pricing. Anyone requesting information will be sent the current Dealers Room flyer and will be added to the mailing list. We have a number of dealers who have moved and left no forwarding addresses. Any such dealer reading this article may be

reinstated on the mailing list simply by sending me a change of address card. If possible, please include your telephone number.

After Noreascon 3, tables may be reserved by sending a deposit of \$50.00 for each table, with a limit of three tables per dealer. A booth may be reserved for a deposit of \$100.00, with a limit of one booth per dealer. No combination of booths and tables will be allowed. All checks are to be made out to "Chicon V". All persons who hold the \$95.00 presupporting memberships will receive a separate letter explaining their status in regard to priority number assignments and the payment schedule for the Dealers Room.

For information, to have your name added to the mailing list or to make a Dealers Room reservation (during the time indicated above) write to:

Steve Francis
Chicon V Dealers Room Manager
5503 Matterhorn Dr.
Louisville, KY 40216-1326

Steve Francis



FUNCTIONS & ACTIVITIES

The Program Division is gearing up to present a full and varied program. We want to examine science fiction's myriad manifestations in today's world. From the many forms the written word can take, to fine and decorative arts in every medium, to performing and entertainment arts – we want to touch on every expressive facet of fandom. Hopefully, we'll also get the opportunity to examine the roots of today's fannish activity, and to try to project what tomorrow may bring, for science fiction and fandom in particular, and for the world in general. No matter if you're a trufan or a Trekfan, a comics fan, a gamer, a filker, a movie buff or an ani-maniac, we hope you'll find programming to interest and entertain you at Chicon V!

We welcome your suggestions and/or comments regarding programming, and, of course, we're seeking

volunteers for our staff. To communicate with us, just drop us a line via the Chicago P.O. Box, care of the Program Division. If you've already volunteered but haven't heard from us since you signed up, don't despair; we haven't forgotten about you. All volunteers should be receiving an initial staff mailing around August 1, 1989.

In PR#2 we'll tell you something about the different types of programming we're planning, and enumerate the various activities covered by the Programming Division umbrella. In addition, to give all you enthusiastic but undecided fans a better idea of where you might fit into the scheme of things, we'll give you more specific information about the kinds of jobs available.

*Cathy FitzSimmons
& Debbie Wright*

Programming

Things to Come

Thanks to all of you who supported Chicago in its efforts to become the Forty Ninth World Science Fiction Convention! Your time, money, and suggestions were very much appreciated. Now your time and suggestions are needed again. Write us. We want to hear from you.

In future PR's we are going to experiment with a "Letters to the Editor" column, a "Restaurant Review" column, a "Tourist Trap of the Half Year" column, maybe even (gasp) a "Suggestion" column! In order to have Letters, or Suggestions, you must send a letter with a suggestion. How unique, how exciting, how awesome, how soon can we expect to hear from you?

Yours in Terror,
Kathleen Meyer
Chairman, Chicon V



BUSINESS

Financial Report

The finances of Chicon V are alive and well and living in banks in Illinois and Ohio. Shown below is a summary of our cash flow to date. Our financial statements will be published as soon as our financial staff is in full operation.

Cash Flow to Date (as of 1/31/89)

Total Revenue	\$64,556.00
Total Expenditures	\$ 4,303.00
	<hr/>
Net Revenue	\$60,253.00



The Chicago in '91 committee has requested that the following information be included in this progress report.

Total Pre-Support Revenue	\$20,495.60
Advertising Expenses	\$ 3,088.65
Travel, Lodging, and Party Supplies	\$ 7,962.23
Misc. Expenses	\$ 768.82
	<hr/>
Total Expenses	\$11,819.70
Excess of Revenue over Expenses (as of 1/31/89)	\$ 8,675.90

The Chicago in '91 bid would again like to express their thanks and appreciation for all the support received while running their bid. Final excess revenues will be donated to Chicon V.



GREAT ATTRACTION!

* The L & N Presents *

NASHVILLE IN '94

a worthy bid for the

52ND WORLD SCIENCE FICTION CONVENTION

—*—

The Proprietors

KHEN MOORE • STEVE FRANCIS • SUE FRANCIS

have procured First Class Accomodations at the magnificent

OPRYLAND HOTEL

In historic Music City

NASHVILLE, TENNESSEE

Rich and Rare Times may be expected by all, as the hotel is one of the largest in the Nation. They have also been pledged the considerable talents and services of many faithful fans who have been busily engaged in the bid. Any persons wishing to volunteer their services for this Extraordinary Endeavor should contact the Proprietors at the address given below.

—*—

* PRE-SUPPORTING MEMBERSHIPS *

\$5.00

* FOR SALE NOW *

—*—

Apply Without Delay!

Requests for information as well as cheques, certified drafts on any bank, and postoffice money orders can be sent by mail to the following address.

NASHVILLE IN '94

P.O. BOX 58247, LOUISVILLE, KY 40258



Dost Thou Seek A Magical Worldcon?
Verily, Orlando In '92 Will Grant Thy Every Wish

With Great Facilities

The Orange County Convention & Civic Center: 388,000 Sq. Ft. of meeting and exhibit space, almost all on one level; State-of-the-art in every area, from lighting to handicapped access to security.

The Peabody Hotel: Our headquarters hotel, directly across the street from the Convention Center; 58,000 Sq. Ft. of additional function space; four restaurants; breathtaking decor; professional child care; trained mallard ducks.

With Great Accomodations

Over 4,000 rooms blocked at close-at-hand hotels.
Wide range of room rates.
Shuttles to all Orlando attractions.
Free parking at all hotels.

With A Great Committee

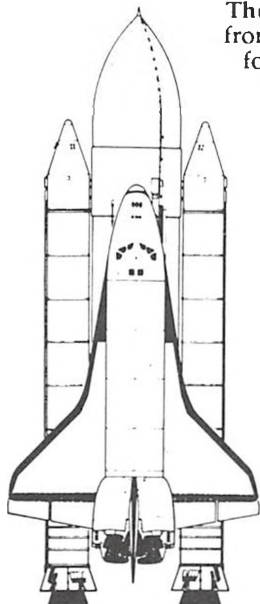
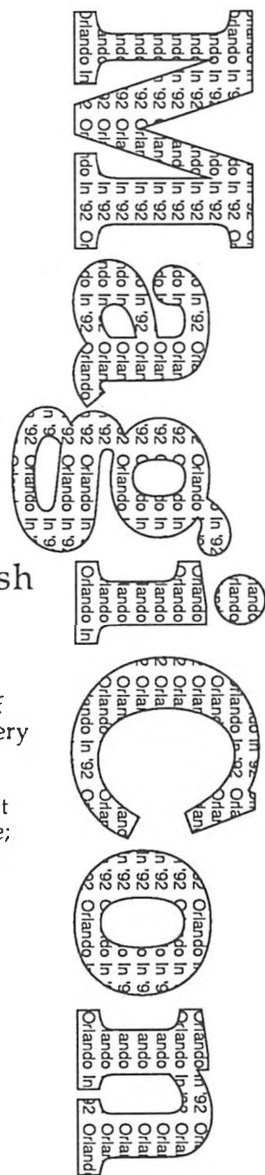
Experienced in high level posts at past Worldcons.
Members have founded and chaired regional & local cons.
Solid local base in Orlando and Florida.

And A Really Great Location

2 minutes from Sea World
15 minutes from EPCOT / Disney World
50 minutes from Cape Canaveral

If you'd like to help bring the Worldcon to Orlando, become a **MagiCon / Orlando in '92** presupporter. For just \$5.00 (which will be credited toward your Worldcon membership after we win), you will receive a **MagiCon** button, a subscription to our bidzine, discount prices on our sensational **MagiCon** T-shirt, and a lot of great parties.

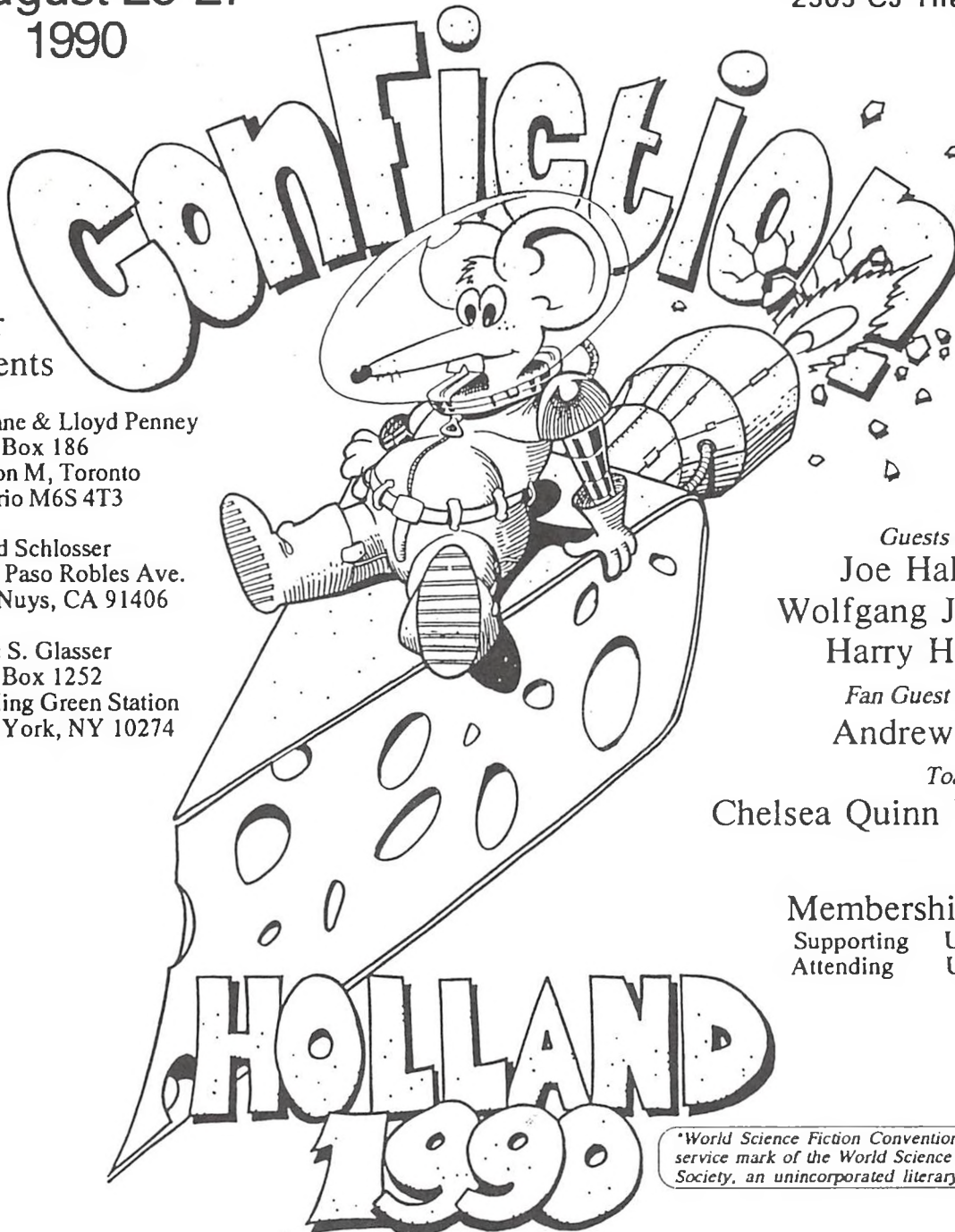
MagiCon / Orlando in '92
P.O. Box 621992
Orlando, Florida 32862-1992



48th World Science Fiction Convention Netherlands Congress Centre - The Hague

August 23-27
1990

P.O. Box 95370
2509 CJ The Hague
Holland



Our Agents

Yvonne & Lloyd Penney
P.O. Box 186
Station M, Toronto
Ontario M6S 4T3

David Schlosser
7324 Paso Robles Ave.
Van Nuys, CA 91406

Marc S. Glasser
P.O. Box 1252
Bowling Green Station
New York, NY 10274

Guests of Honour
Joe Haldeman
Wolfgang Jeschke
Harry Harrison
Fan Guest of Honour
Andrew Porter
Toastmistress
Chelsea Quinn Yarbro

Membership rates
Supporting US\$ 28.00
Attending US\$ 70.00

World Science Fiction Convention is a service mark of the World Science Fiction Society, an unincorporated literary society.

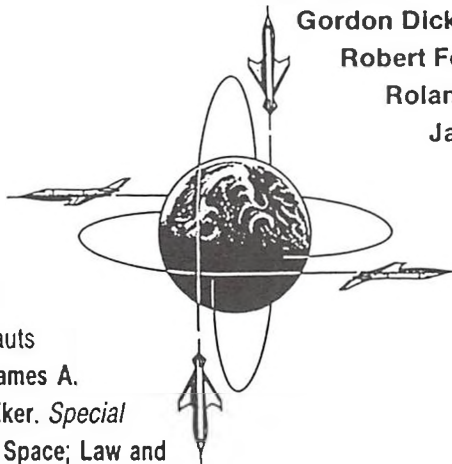
KLM Royal Dutch Airlines has been appointed official carrier for the 48th World Science Fiction Convention.
Call toll free 01-800-KLM-777-5553

SPECIAL OFFER
For All CHICON V Members/Supporters
SPECIAL HALF PRICE (\$45) ADVANCE REGISTRATION
(UNTIL APRIL 30 ONLY)

FOR THE 1989 INTERNATIONAL
SPACE DEVELOPMENT CONFERENCE
 MEMORIAL DAY WEEKEND, MAY 26-29, 1989, IN CHICAGO — HYATT REGENCY O'HARE HOTEL
(THE WORLDCON OF SPACE CONFERENCES)

**SCIENCE FICTION
 AUTHORS INCLUDE**

- Ben Bova
 Hal Clement
 Gordon Dickson
 Robert Forward
 Roland Green
 James P. Hogan
 Frederik Pohl
 Stanley Schmidt



— Moebius —

The Moebius Theatre presents the Humor of the Space Age. *ALSO*—Astronauts include: Eugene Cernan; James A. Lovell, Jr.; and Charles Walker. *Special Symposia* on Business and Space; Law and Space; Medicine and Space; Teaching Space; and Mars. *Program tracks include:* A Celebration of Apollo; Living in Space; Lunar Development; Space Science and Technology; and more. *Special Exhibits; Special Tours* (Fermilab; Argonne Nat'l Lab.; Museum of Science & Industry).

IF EVER YOU WOULD ATTEND A SPACE DEVELOPMENT CONFERENCE, THIS IS THE ONE!

For further information, write SDC Ltd., P.O. Box 64397, Chicago, Illinois 60664-0397, U.S.A.

- **Registration Fee**—\$45 to April 30; \$65 to May 15; \$90 thereafter.
- **Hyatt Hotel Rooms**—\$69/night, single or double. Call 1-800-228-9000.
- **American Airlines**—Special discount air fares: 45% off coach fares or 5% off any special fare (all restrictions apply), whichever is less. Call 1-800-433-1790; ask for Star File No. S67088.

1989 SDC REGISTRATION — Enrollment Limited! Register Early!

Name (print) _____ Age _____ M ___ F ___
 Address _____
 Telephone (H) _____ (B) _____ Affiliation: ChiCon ___ Other _____
 Employment: Title _____ Employer _____
 Were you at the SDC in 1982 ___ 1983 ___ 1984 ___ 1985 ___ 1986 ___ 1987 ___ 1988 ___ ?
 Check here if a teacher ___ I volunteer to help ___ before ___ at the Conference. Is handicap access needed? _____
 I am interested in making a "Many Roads to Space" minipresentation _____
 I ENCLOSE*: ___ SDC Registrations at \$ _____ each; ___ students at half price (\$ _____) each = \$ _____
 (Make checks payable to Space Development Conference, and mail to P.O. Box 64397, Chicago, IL 60664-0397, U.S.A.)
 (Please include name, address, and phone number of each other registrant)
 * \$45 to April 30; \$65 to May 15; \$90 thereafter; full-time students half applicable price. Prices are subject to change without notice; full refunds (except for \$5 handling charge) will be available up to 35 days prior to the Conference

PUBLICATIONS

This progress report is primarily a newsletter. PR#2, to be distributed just before Norcascon 3, will be more of a "glossy" with information and features of general interest in addition to specific information about Chicon.

The deadline for advertising and editorial submissions to PR#2 is 1 July, 1989.

All ads must be submitted actual size (see chart below) as camera ready art. If the artwork is not properly sized, or additional preparation is needed

before ads can be reproduced, additional charges may be incurred. You will be notified of any problems with your ad before it is accepted for publication.

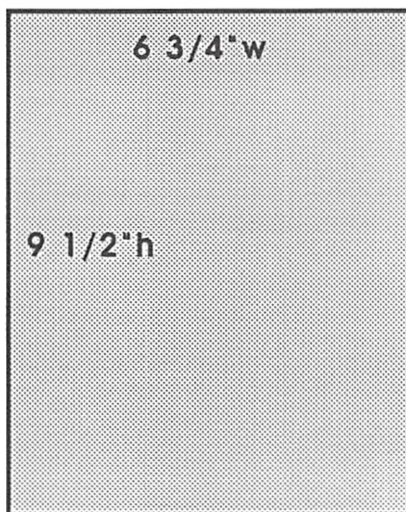
Checks for ad placement should be made out to Chicon V, and must accompany the artwork. Ship properly packaged flat ads to:

Chicon V
Publications
528 Whitson Drive
Gahanna, OH 43230

Please note: ad rates are based on the sizes indicated. There are no full-bleed ads planned for the next few progress reports. If you require bleeds (or halftones) please contact the editor at the address above to discuss requirements and costs.

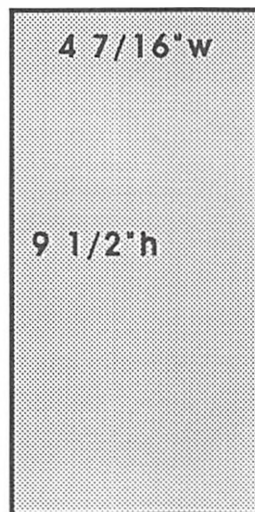
Chicon V reserves the right to determine the difference between a pro and a fan ad. The generally accepted definitions used in fandom will be applied, but the decision of the editor is final.

FULL PAGE



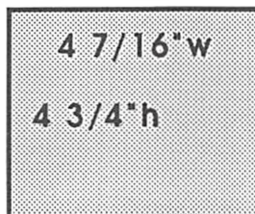
FAN = \$80.00
PRO = \$250.00

2/3 PAGE



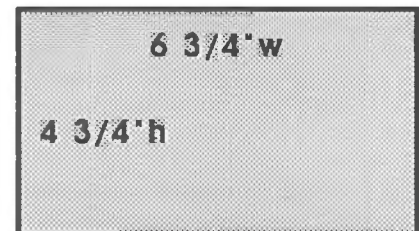
FAN = \$70.00
PRO = \$210.00

1/3 PAGE



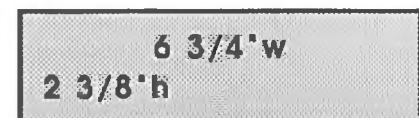
FAN = \$50.00
PRO = \$150.00

1/2 PAGE



FAN = \$60.00
PRO = \$175.00

1/4 PAGE



FAN = \$40.00
PRO = \$125.00



MEMBERSHIP BY COUNTRY, PROVINCE OR STATE

List as of January 19, 1989



Address Unknown (1)
Aines, Steven R. A00510



Australia (12)
Ackroyd, Justin P. S00505
Batho, Graeme S00574
Beasley, Sally S00577
Clarke, Susan S00725
DaSilva, Wilson S00801
Ferguson, Roy S00932
Hall, Martin S01081
Handfield, Carey S01090
Herman, Jack R. S01129
Hirsh, Irwin S01147
Lingard, Gordon S01356
Orlieb, Marc S01588



Bermuda (1)
Bouska, Amy S. A00629



Alberta, Canada (5)
Booker, Delores A00625
Capes, Eileen A00676
Collinson, Jack A00758
Mahaffey, Corinne A01400
Samuels, Jr, Clifford A01785



British Columbia, Canada (3)
Affleck-Asch-Lowe, Wm. A00507
Dann, Michael B. A00798
Skene, Fran A01858



Manitoba, Canada (17)
Bindas, Donald A. A00604
Blair, D. H. A02348
Clement, David A00730
Clement, Elizabeth A00731
Crighton, Douglas A00784
Kucera, Thomas G. A01295
Mansfield, John A01408
Rempel, Peter H. S01710
Ross-Mansfield, Linda A01848
Simmonds, David A01849
Simmonds, Guest of David A01882
Siem, Debbie A01915
Siem, Donald A01916
Ward, Laura S. A02202
Ward, Murray R. A02052
Yaworski, Veronica A02129



Ontario, Canada (34)
Baskin, Marg A00571
Bateman, Gary A00572
Burrows, Allan D. A00660
Caswell, Dennis A02286
Christian, Carole A00714
Christian, William A00715
Duck, Darien S00867
Fowler, Heather A00966
Fowler, Wayne A. A00968
Glicksohn, Michael D. A01029
Graham, David A02418
Grant, William A01048
Hamilton, Nora A01084
Hancock, D. Larry A01088
Hancock, Jody Dix A01089
Huckl, BA, BEd, Cynthia A. A01173
Julian, Caroline A02420
Lieven, Andre A01349
Mackenzie, Lisa A01395
Millard, Grant A01475
Miller, Martin A02436
Mohapel, Charles C. A01499
Mullin, Dennis A02293
Permye, Lloyd A01634
Permye, Yvonne A01635
Robinson, Susan A01741
Saunders, Lyn M. A01796
Schofield, Barbara A02449
Scrimgeour, Howard J. S01812
Smith, Michael T. A01868
Spencer, Henry A01885
Toop, Geoffrey A01979
Ward, Jacqueline M. A02048
Woo, Ian A02116



Quebec, Canada (2)
Aspler, Joseph A00541
Moir, Lillian E. S01501



France (2)
Lasne, Francois-Xavier S01312
Thomas, Pascal J. S01963



Great Britain (6)
Deikum, Philip G. S00825
Dorner, Paul A00852
Hoare, Martin A. A01149
Pickersgill, Linda K. S01653
Robinson, Roger A01740
Spencer, Philip S01886



Japan (4)
Osako, Masamichi A01589
Osako, Michiko A01590
Takeuchi, Shinsuke A01945
Yamaoka, Ken A02127



Mexico (1)
Oberg, Gerda K. A01572



Nederlands (3)
Van Asseldonk, Bertie S02010
Van Toorn, Kees S02020
van der Putte, Larry A02012



Norway (2)
Berg, Johannes H. S00592
Lien, Anton A01348



New Zealand (1)
McLaughlin, Elizabeth S01451



Alabama, USA (23)
Beyke, Maurice A00602
Buffaloe, Theresa D. S00654
Butler, Bruce A00664
Butler, Eileen A00666
Carron, Ben J. A02203
Carron, Joe A02204
Cochran, Joe A00739
Cochran, Linda A00740
Dyar, Allyson M. W. A00873
Dyar, Dafydd Neal A00874
Frierson, Penny A00988
Garber, Richard A01257
Kennedy, Michael D. S01540
Myhre, Oyvind A01258
Kennedy, Nelda Kathleen A01460
Melton, Jarris M. A01503
Molloy, G. Patrick A01574
Odum, Jr, James Carl A01574
Riley, Linda L. A01779
Sackett, Karl R. S01872
Smith, Samuel A. A01883
Speer, Tony A02121
Wootley, James K. A02121



Arizona, USA (23)
Bard, Barry A00560
Cady, Tasha A00670
Cady, III, Charles Earl A00671
Daniel, James S00796
Daniel, Linda S00797
Doran, Kathy A00850
Farr, Kim A00921
Farr, Murray Bruce A00922
Fong, John Sim A00959
Fong, Kandis Lydia A00960
Gish, Ray A01026
Gish, Terry A01027
Goddin, Jean A01030
Gunderson, Eleanor A01069

Hutson, Melinda A02200
O'Green, Mark R. A01570
Roberson, Jennifer A01734
Score, David A01810
Shibley, James A01829
Webbert, Doreen A02066
Webbert, Jim C. A02067
Wedell, David A. J. A02070
Willmoth, Mike M. A02106



Arkansas, USA (1)
Wroble, Gayle A02124



California, USA (227)
Abramowitz, Alyson L. A00503
Alves, James W. A00517
Anderson, Gary S00523
Anderson, Janet Wilson S00524
Andruschak, Harry S00529
Armbruster, Bobbi A00534
Austin, Alicia A00549
Austin, Elizabeth S00550
Bangs, Mari L. A00558
Barrett, Bryan A00565
Beers, Jinx A00579
Bender, Jan A00585
Berry, David A00600
Britt, David A00644
Brown, Charles N. A00649
Brown, Jordan A00650
Brunet, James A. A00653
Byrd, Brent A. S00669
Cantor, Robbie S00675
Carroll, Cathy A00685
Carter, Craig William S00689
Celko, Joe S00700
Chapman, Cheryl Lynn A00703
Chapman, John P. A00704
Chapman, Judith Arm A00705
Chong, Anthony O. A00711
Chong, Dorlinda S00712
Chong, Tina A00713
Clark, David W. A00721
Claypool, Gavin A00726
Cleary, Linda A00727
Cleary, Sean A00728
Clift, Paul S. A00736
Clift, Shelly Rae A00737
Cohen, Sanford A00745
Cook, Norman L. S00767
Daugherty, James A00802
Daugherty, James A00803
Daugherty, Kathryn A00809
Dazzo, Genny S00817
DeLade, Michelle S00812
Deckert, Dan S00813
Deckert, Danice S00835
Diggs, Patricia A. S00857
Douceite, Douglas P. A00875
Dyer, Andrew R. A00880
Echtermacht, Gary S00882
Edich, Barbara S00883
Edich, Peter A00884
Edison, Laurie Gottlieb A00892
Eivins, Thomas D. S00894
Ellersieck, Frank H. S00893
Ellersieck, Marjorie A00895
Elliott, Russell S00905
Erickson, Linda A00906
Eslinger, Joan A00910
Everling, Michael B. A00923
Ferrer, Doug S00929
Ferrer, Susan S00940
Finkelstein, Edward P. S00952
Fitch, Donald S. S00962
Foss, H. Richard S00963
Foss, Janice Yeager S00963

MEMBERSHIP BY COUNTRY, PROVINCE OR STATE

List as of January 19, 1989

Frame-Gray, Nola A00971
 Franson, Donald L. S00977
 Freeman, H. Denise A00982
 Fuller, Frederic E. A00989
 Fusello, Deborah J. A00990
 Gallagher, David S00992
 Gelb, Janice A01002
 Gerds, Eric A01007
 Gold, Barry A01031
 Gold, Lee A01032
 Goldman, Diane S01035
 Goodin, Joy S01040
 Gray, Louis Elver Warren A01051
 Groot, Harold A01064
 Gruen, Richard A01068
 Hamesa, John R. S01100
 Harrigan, Chris A01102
 Harrigan, Harold F. A01103
 Harrigan, Jenevieve A01104
 Harrigan, Lisa Deutsch A01105
 Hartlove, Aimee A01111
 Hartlove, Jay A01112
 Heard, Robert W. S01117
 Heredia, Dina S01128
 Higgins, Gail A01139
 Hipp, Scott A01146
 Holtman, David L. A01163
 Howard, Geraldine E. A01170
 Huber, Charles F. A02278
 Hyman, Sara S01185
 Jackow, MD, Alan D. A01189
 Jenkins, Stacy A01205
 Johnson, Barbara N. A01211
 Johnson, Donald Lloyd A01213
 Johnson, Todd A01217
 Kare, Jordin T. A01238
 Kaldeman, David S01240
 Kato, Keith G. A01241
 Kenin, Milica S01254
 Konkin, Samuel E. S01285
 Landan, Mrs. Stephen A01301
 Landan, Stephen A01300
 Laurent, Robert H. A01314
 Levin, Robert H. A01335
 Loubert, Denise J. A01370
 Louis, Gary K. A01371
 Low, Danny A01373
 Lowenstrom, C. I. S. A02427
 Lysaught, Joan A01394
 Mason, Michael A01423
 Matheny, Charles A01425
 Matlock, Trevin S01429
 Maynard, Jeffrey D. A01434
 McCombs, Cheryl A. A01440
 McCoy, Sean M. A01443
 McGuire, Christian A01449
 Meier, Wesley J. A01455
 Meier, Wilma A01456
 Miljkovic, Robert W. A01474
 Miller, Craig A01478
 Miller, Dennis B. A01479
 Miller, Laura S. S01481
 Miller, Michael J. A01482
 Mitchell, 1 Guest of Andrea A00945
 Mitchell, 2 Guest of Andrea A00946
 Mitchell, 3 Guest of Andrea A00947
 Mitchell, 4 Guest of Andrea A00948
 Mitchell, 5 Guest of Andrea A00949
 Mitchell, 6 Guest of Andrea A00950
 Mitchell, Andrea F. H. A01487
 Mitchell, Elliott A01488
 Mitchell, George H. H. A01489
 Mitchell, Matthew G. S01493
 Mitchell, Petra A01495
 Molitch, Caroline S01502
 Nakashima, Lex A01540
 Neff, Julie A01546
 Neff, Randall A01547
 Nelson, Carl E. A01550
 Nicholas, Beverly A01554
 Niven, Larry A01562
 Niven, Marilyn A01563
 Olum, Ken S01583
 Paley, William C. A02482
 Pastor, Valerie A01614
 Patten, Frederick A01616
 Pearce, J. W. A01625
 Pearce, Mary A. A01626
 Pearce #2, J. W. A01627
 Pearce #2, Mary A. A01628
 Pelz, Bruce E. A01632
 Pelz, Elaine F. A01633
 Penrose, James K. A01636
 Peterson, Donald S01644
 Pettis, Jr, Roy C. A01648
 Porter, Kenneth A01667
 Priester, William E. A01676
 Quirk, Nathalia A01685
 Randall, Marta G00019
 Rebholz, Jeffrey J. A01704
 Redden, Ben A01705
 Redden, John A01706
 Rightor, 1 Guest of Michael A02444
 Rightor, 2 Guest of Michael A02445
 Rightor, Michael G. A02443
 Riley, Cormie L. A01722

Rivoli-Paley, Bridget M. A01730
 Robnett, Linda Louise A01737
 Rogers, Jeff A01745
 Romine, Nina A01750
 Romine, Terry A01751
 Rush, J. Edward A01771
 Satterfield, Dale D. A01794
 Schlofer, Mike A01803
 Schneider, Gene A01804
 Sefton, Laurie A01815
 Selinger, Gail A01818
 Shilling, Layne M. A01832
 Shoji, Joseph H. A01834
 Siders, Ellen A01837
 Silverberg, Karen Haber A01843
 Silverberg, Robert A01844
 Silverstein, 1 Guest of R. T. A02235
 Silverstein, MD, Ronald T. A02234
 Singer, David S01855
 Smith, Michael A01867
 Smith, Sean M. S01873
 Smith, Vicki A01875
 Stadler, Mark A01895
 Stelnicki, J. A. A01911
 Steward, James G. A01918
 Steward, Suzette A01919
 Stevens, Milton F. A01921
 Swain, Alan A01936
 Swanson, Anders A01937
 Tallan, Michael A01946
 Tennille, Daniel A. A02280
 Tennille, Darlene A02281
 Testa, Emily Jo A01959
 Testa, Jr, John P. A01960
 Tracy, J. L. S01983
 Tripp, Galen A. S01988
 Turner, Karen L. A02001
 Turner, Kelly F. A02002
 Turledove, Harry A02458
 Turledove, Laura A02459
 Tuihiasi, Lauraine A02006
 Urany, Nora A. A02007
 Von Kospach, Chuq A02030
 Wald, Linda A. A02035
 Ward, Michael J. A02051
 Waterman, Deborah L. A02058
 Watson, Kennita Lane A02060
 Wein, Len A02071
 Weinstein, MD, Elliott A02073
 Wells, Roger S. S02078
 White, Laura A02081
 Whitmore, Tom A02086
 Widner, Art S02090
 Wimler-Cox, Robert A02110
 Wolf, Anne A02463
 Wolf, Joyce E. A02464
 Wolf, Katherine A02465
 Zarlow, Willow A02137
 Zenk, Margo A03144



Colorado, USA (21)
 Bishop, William J. S00609
 Boice, Melissa A00621
 Cleaver, Frederic A00729
 Diersing, Sandra A00830
 Drisgill, Doris E. A02272
 Hogan, Eileen R. A01155
 Johnson, Tom A01218
 Larue, Candace S. A01309
 Larue, Stephen M. A01310
 Laviana, Dorna L. S01315
 Michals, Paul R. S01472
 Miller, Bruce M. A01477
 Morman, Brian A01518
 Neitzke, Paul G. A01549
 Raymo, Mark A01700
 Raymo, Mary A01701
 Sestak, Michael A01819
 Sokola, Joseph A. S01879
 Sutherland, James L. A01933
 Walker, Stephen A02039
 Woldow, Cathy A02462



Connecticut, USA (18)
 Beatman, Howard G. A02230
 Carmichael, John G. A00683
 Cohen, Jeremy M. A00744
 Cohen, Permy A02197
 D'Alessio, Angelo S00793
 DeGuardiola, Susan A00814
 Elms, Duane A00897
 Jackowski, Ammarie A01190
 Jackowski, Walter A01191
 Kirstein, Sabine S01273
 Matthews, Robert W. A01430
 Pekowski, Lame A01631
 Powers, Richard G00013
 Reynolds, James W. A01716
 Sibley, Jane T. A01835
 Sinou, Dusty A01856
 Taylor, Charlene S01949
 Taylor, Patricia E. S01951



Delaware, USA (6)
 Benson, Robert P. A00588
 Carey, Stephen A. A00680
 Cunningham, Jr., Robert D. A00790
 Lebovitz, Nancy A01325
 Moran, Sean W. A01513
 Proksch, Lawrence R. S01678



District of Columbia, USA (5)
 Flanagan, Sally J. A00953
 Huckenpahler, J. G. A02279
 Matthews, Jr, Winton E. A01431
 Renner, Theresa A. A01712
 Sepenza, Jr, John T. A01792



Florida, USA (74)
 Ackerman, Eve A00504
 Adkins, Toni S00506
 Barton, Adrian A00569
 Bemis, Judith C. G00018
 Bennett, J. David A00586
 Bennett, Linda Lee A00587
 Brown, Phyllis S00651
 Byers, Richard Lee A00667
 Cole, Anita L. A02350
 Cole, Steven P. A00751
 Cole, Susan A. A00752

Cordameyer, Paul A00772
 Cornwell, Sue A00773
 Crabb, Terri A00781
 Davenport, Anne R. A02271
 Davis, Bonnie A00804
 Dowler, Frank H. A00861
 Drawdy, Michael A00863
 Ellis, Steve A00896
 Gates, Margaret A00998
 Gilliam, Richard H. A01018
 Haight, Cindy A01076
 Haldeman, Joe W. A01078
 Haldeman, Mary G. A01077
 Hanson-Roberts, Mary A02365
 Herz, Melanie A01133
 Herz, Ray A01134
 Hillyard, Denise A01142
 Hillyard, Kenneth A01143
 Jones, Mark K. A01223
 Jordan, Jean I. A01227
 Keck, Melissa M. A01247
 Kiser, Lara A01274
 Kleba, Louise S01275
 Kora, David A01284
 Koon, H. Suzi S01288
 Lawrence, Ann L. A01316
 Lindow, Ellen C. A01353
 Lindow, Michael W. A01354
 Lyman, Alex G. A01388
 Lyman, David G. A01389
 Lyman, Deanna L. D. A01390
 Martine, Victor C. A01422
 Masters, Gerald E. A01424
 McAdams, Jermy S01437
 Morris, Ann W. A01520
 Morris, Kendall D. A01521
 Morris, Kendall F. A01522
 Murphy, Lynn K. A01535
 Neilsen, Ingrid A01548
 Osborne, Elizabeth A. A01591
 Oswald, Glen A01592
 Oswald, Ruth A01593
 Parker, Tony E. A01608
 Peters, Becky D. A01643
 Powell, James A01670
 Ratti, David A01698
 Rosenberg, Andrea A01754
 Sandler, Richard A01788
 Siclar, Joseph D. A01836
 Silverman, Mitchell A01845
 Stern, Edith A01917
 Taylor, Beatrice S01948
 Thompson, John G. B. A02456
 Thomson, Becky A01967
 Tipton, V. Kimiye A01973
 Trautman, Susan L. A01984
 Truelove, Paula S01992
 Valentine, Glenn T. A02008
 Warren, Wade Allen A02056
 Wilcoxon, MD, Joseph K. A02093
 Williams, Betty L. S02097
 Wilson, William Lee A02107
 Worley, Michelle S02123



Georgia, USA (56)
 Blair, Lewis A. A00611
 Brinkman, Darin S00645
 Cashman, Paul W. S00693
 Coker, Roy E. S00747
 Coogler, Carolyn A02410
 Cook, Jr, Donald R. A00769
 Crawford, J. Ric S00783
 Dietz, Arm A00831
 Dietz, Franklin A00832
 Dietz, Karl A00833
 Dietz, Loren A00834
 Dillion, Michael A. A00836
 Garrison, Ken A00996
 Gilpatrick, James L. S01022
 Gilpatrick, Lydia S01023
 Groce, Renee L. S01063
 Holec, Kim F. A01158
 Holland, Kit S01160
 Hudson, Timothy L. A01176
 Hughes, Diane S01177
 Huaky, Alan S01183
 Jeude, Samanda B. A01207
 Leach, Zanny A01323
 Lieberman, Debra A01346
 Lucyshyn, P. Alex A01377
 Lucyshyn, Teri N. A01378

Martin, Anya M. A01416
 Martin, William Culbertson A01421
 Matheson, Dennis A01426
 Matheson, Laura A01427
 Mays, Susan A01435
 McCaulla, Herbert F. A00861
 Miller, Glenda J. S01480
 Monk, Jonathan A01504
 Moore, Perry Glen S01510
 Morell, Pat A01514
 Phillips, Sue A01652
 Reaser, Michael H. A01703
 Reed, Dennis A. A01707
 Reed, Wanda A01708
 Ritch, William A01765
 Roth, Stefan A01726
 Skidmore, James H. S01859
 Staley, Dale M. A01897
 Staley, Sheryl A01898
 Stearns, Adrienne A01901
 Stearns, Freda E. A01902
 Stearns, Jr, Robert E. A01903
 Stevens, Mark S01920
 Sutton, Brenda Sinclair A01934
 Sutton, William R. A01935
 Taber, Rebecca G. A01942
 Tate, James A01947
 Watts, Eric L. A02062
 Weber, Michael A. S02068
 Wilbanks, Caran A02092



Hawaii, USA (1)
 Sanders, Debra F. A01786



Idaho, USA (1)
 Casey, Correen A00692



Illinois, USA (337)
 Ahearn, Laurence D. A02387
 Aleschler, Matthew B. A00516
 Anda, Andrew Allen A00519
 Apple, Alexander A02236
 Apple, Audra A02237
 Apple, Birute J. A00531
 Apple, Edward M. A00532
 Aquino, Leocadia V. A02267
 Aronson, Lynne A00537
 Aronson, Mark J. A00538
 Auer, Jane A00547
 Baddorf, Debra S. A02215
 Bailey, Colleen C. A02321
 Bailey, Mark W. A00554
 Bailey-Mathews, A. I. A00555
 Ballard, Albert D. A00023
 Bartlett, Albert A00567
 Bartlett-Sloan, Kirby A. A00568
 Bartlett-Sloan, Marie L. A00008
 Beal, Robin A00576
 Beese, Patricia J. A00580
 Beese, Robert A. A00002
 Bentley, Alice A00589

MEMBERSHIP BY COUNTRY, PROVINCE OR STATE

List as of January 19, 1989

Hanlon, Thomas R. A01092
 Hannie, Sandra D. A01093
 Keller, Ted A01249
 Kemper, III, C. Barton S01252
 Kniezan, Dorrie A01278
 Krueger, Marj S01294
 Levin, Jennifer S. A01334
 Lillian, III, Guy H. A01350
 Lockwood, Carol A01363
 Madden, James R. A01397
 Moore, Marian D. S01509
 Neagle, Robert A01545
 Pinto, William H. A01656
 Ragan, Jr, Lewis C. A01687
 Ranson, Margaret A01691
 Rmihan, Lynne M. A01711
 Rivas, Randolph A01729
 Strickland, Sheila G. A01929
 Terry, Cece A01955
 Terry, Jr, Frank A. A01957
 Thornhill, Michael C. A01969
 Turminello, Charles S. A01998
 Varner, Steven C. A02022
 Whitaker, SaraJane A02087
 Wiley, Lucy A02095
 Wismer, Mary R. A02111
 Young, Diane E. A02132
 Zrimsek, Paul A02146



Maine, USA (4)
 Abellick, Paul S00502
 Burdick, Bruce S. A00655
 Crowther, Jill M. S00788
 Snuck, Duane S01930



Maryland, USA (85)
 Atkinson, Thomas G. A00543
 Avery, B. Shirley A00551
 Bamhard, Gary A00563
 Bamhard, Judy A00564
 Beech, Robert A02388
 Birkhead, DVM, Sheryl L. A02347
 Bloom, Kent A00615
 Blute, Mary-Rita A02392
 Caplan, Jack A00677
 Carson, Dana A00686
 Carson, Gwendolyn A00687
 Carson, Melinda A00688
 Chalkey, Jack L. A00701
 Cohen, Susan E. A00746
 Corcoran, Dan A00771
 Deutsch, Martin A00827
 Drexler, 1 Guest of Marc A02355
 Drexler, 2 Guest of Marc A02356
 Drexler, 3 Guest of Marc A02357
 Drexler, 4 Guest of Marc A02358
 Drexler, 5 Guest of Marc A02359
 Drexler, 6 Guest of Marc A02360
 Drexler, Marc A. A00864
 Duff, John A00869
 Duff, Lynn Ellen A00870
 Eney, Richard H. A00899
 Evans, Julie F. A00908
 Filmore, Thomas H. S00938
 Fleischmann, II, Joseph A00954
 Flynn, John L. A00956
 Fraz, D. Douglas S00979
 Freyer, III, John A. A02198
 Gear, Martin A01000
 Gear, Martin A01001
 Germond, Geoffrey K. S01008
 Ginter, Karl A01025
 Groen, Eleanor M. A02199
 Henehan, Jack A01123
 Hoey, Daniel J. A01150
 Jaffe, William W. S01199

Jensen, William J. A01206
 Kelly, Miriam Winder A01250
 Kelly, Jr, Patrick Joseph A01251
 Lindboe, Wendy I. A01352
 Long, Katherine C. S01367
 Loomis, Nancy E. A01368
 Madle, Billie A01398
 Madle, Robert A. A01399
 Mayhew, Joseph A01433
 Melnick, Linda A01459
 Merckle, Nancy A01463
 Minneman, Lynn P. A02232
 Mirando, Jeffrey P. A02220
 Mortman, Mary A01519
 Morton, Keith H. A01525
 Nalle, Ann A01542
 Nicht, Sandra K. S01557
 Normandy, Elaine A01564
 Palmer, Susan A01602
 Paul, Patrick E. S01617
 Pavlat, Eric C. A01622
 Pavlat, Peggy Rae A01623
 Phillips, Evan A01651
 Pinski, Laurie A01655
 Roberts, Carol A01735
 Roberts, John A01736
 Ruh, Lawrence A. A01770
 Sakers, Donald P. A01784
 Sands, Kathy A01789
 Sands, Leo A01790
 Schroeder, Larry A01806
 Stiles, Elaine S01924
 Stiles, Steve S01925
 Szczepaniak, III, Joseph B. A01940
 Vartanoff, Ellen A02023
 Vogl, Thomas P. S02029
 Von Buhr, Paul E. A02460
 Walsh, Michael J. A02461
 Ward, Anthony D. A02045
 Ward, Dalroy A02047
 Watt-Evans, Lawrence A02061
 Whitley, Eva A02085
 Who, Sue A02088
 Wooster, Martin Morse A02122
 Zeiger, Barry A02138



Massachusetts, USA (115)
 Alvord, Jr, J. Clinton A00518
 Anderson, Claire A00520
 Anderson, David A00521
 Atwood, Bonnie A00544
 Atwood, Deborah E. A00545
 Atwood, Ted A00546
 Baty, Kurt A00575
 Breslau, Esther S. A00639
 Breslau, Michael A00640
 Broomhead, Ann A00648
 Burnside, T. J. A00659
 Cantor, David A. A00674
 Cary, Sharon Anne S00690
 Caswell, Robert W. A00696
 Chernoff, Anton A00707
 Clapp, Mitchell A00719
 Clement, Guest of Hal G00012
 Clement, Hal G00011
 Cohen, Beth F. A00742
 Colby, Robert A00749
 Cooper, Christopher A00770
 Cowan, Andrew J. A00776
 Dennett, Gay Ellen A00821
 Dobbs-Van, Eric M. A02009
 Doty, Michelle A00856
 Duester, Al A00868
 Eastlake, Jill A00877
 Eastlake, III, Donald E. A00878
 Eastlake, IV, Donald E. A00879
 Farmer, Dale A. A02416
 Farmer, Dana A00920
 Feld, Harold A00926
 Firsirotan, Edward A00944
 Flynn, George P. A00955
 Franklin, Ellen F. A00975
 Freeman, Pam A00985
 Giese, Peter C. A01045
 Gray, Wayne B. S01052
 Hammond, Susan V. A01087
 Hitchcock, Charles J. A01148
 Hudson, James F. A01175
 Hummel, Franklin A01179
 Isaacs, Fred P. A01187
 Jordan, Jeffrey L. A01228

Katze, Rick A01243
 Katzoff, Mark A01244
 Keenan, Morris M. A01248
 Kenderdine, Bonnie J. A01253
 Kent, Allan A01259
 King, Deborah A. A01268
 Kovalcik, Rick A01289
 Landry, Paul A01302
 Layton, Alexis A01319
 Lazzaro, Cynthia A01321
 Lazzaro, Joseph A01322
 Lee, Steven A01327
 Lehrman, William A01331
 Lewis, Alice N. S. A01338
 Lewis, Anthony A01339
 Lewis, Susan H. A01340
 Lidral, Bob A01345
 Lieberman, Paula A01347
 Logue, Kathi A01364
 Love, J. Spencer S01372
 Mangun, Lois H. A01406
 Mann, Laurie D. T. S01407
 Melle, Susan A01457
 Melle, II, William D. A01458
 Meltzer, Lori A01461
 Morris, Skip W. S01523
 Mozzicato, Susan A01526
 NESFA S01552
 Nathanson, Phillip M. A01544
 Nicol, Barbara L. A01558
 Norton, Anne M. A01565
 Olson, Mark A01580
 Olson, Priscilla A01581
 Orlandella, Antony M. A01587
 Owens, Stephen R. A01597
 Paolucci, Carol A01624
 Perkins, William A01639
 Persons, Kelly S. A01642
 Pilvinis, James A01654
 Poole, Mary C. A01663
 Prince, Sarah S. A01677
 Rifkin, Howard S. A01721
 Robinson, Andrew A01738
 Robinson, Paul T. A01739
 Robinson, Mary A01742
 Rose-Turner, Clarinda A01753
 Rosenberg, Diane A01755
 Ryan, 1 Guest of Charles C. A01774
 Ryan, 2 Guest of Charles C. A01775
 Ryan, Charles C. A01776
 Ryan, Mary C. A01777
 Sbarsky, 1 Guest of Sharon A02448
 Sbarsky, Sharon A01797
 Shawcross, William E. A01823
 Sigel, Andrew A01842
 Snyder, Deborah Malamut A01877
 Spence, Martha L. A01884
 Springs, Carol A01889
 Stoodt, Michael A. A01927
 Szczesul, Timothy P. A01941
 Taylor, Michael J. A01950
 Thokar, Gregory A. A01962
 Trumpler, Mark A01993
 Turek, Leslie J. A01999
 Turner, James M. A02000
 Vandenberg, Patricia Ann A02021
 Wajert, Peggy A02034
 Waldman, George D. S02036
 Willis, John F. A02104
 Yelle, Janet M. A02130
 Zeiger, Deborah A. A02139
 Zelin, David A. A02140



Minnesota, USA (35)
 Anderson, Lynn C. A00525
 Appelbaum, Jan S00533
 Austin, Kevin A02159
 Bailer, Geraldine A02284
 Bliss, Daniel Jay A02391
 Cieminski, Cathy A02349
 Detry, James A00826
 Drache, Kay Ellen A00862
 Friauf, Douglas J. A00986
 Gahlon, Dean C. A00991
 Glennon, Steven W. S01028
 Harris, Clay A02161
 Johnson, Karen L. A01215
 Jones, 1 Guest of Deborah A02371
 Jones, Deborah K. A01221
 Kaiser, Donald A. A01234
 Ketter, Greg A01261
 Komol, Kermet R. A01286
 Marquart, David W. A01412
 Marquart, Tamara A. A01413
 McKee, Erin S01450
 Mealy, Jeanne M. A02434
 Oaks, Sherry A02186
 Richards, Mark E. A02379
 Rowe, Eric L. A01766
 Ruffa, Gregory J. A02447
 Schaffer, Karen S01800
 Schouten, Herman A02299
 Scrivner, Joyce Kay A01813
 Siegel, Dana B. A01839
 Stanley, John A01899

Michigan, USA (75)
 Agin, Gary P. A00508
 Alway, David J. A02175
 Aronovitz, David A00535
 Aronovitz, Nancy A00536
 Asplund-Faith, Melody A02243
 Asplund-Faith, Randy A02244
 Barber, Thomas N. A00559
 Berman, Alex S00594
 Berman, Vicki S00596
 Bemson, Michael A00597
 Bemson, Myra Maki A00598
 Bishop, James Daniel A00607
 Carleton, Gordon A00681
 Chapek-Carleton, Lori A00702
 Chauvin, Cyrus A02287
 Cole, Barry A02270
 Cornell, William S. A02326

Cowan, Maia E. A02352
 Cronau, Greg A00785
 DeVore, Howard W. A02353
 Eaves, Vicky Lynn A02412
 Edwards-Barber, Tara A00886
 Flynt, Clifton A00957
 Frambach, John H. A00970
 Galloway, Tom A00993
 Giese, Tom A01015
 Gillmore, William S01021
 Guy, Eric A01070
 Harding, Halina K. A02216
 Helou, Audrey V. A02367
 Helou, B. Gabriel A02368
 Honeck, Butch A01164
 Honeck, Susan A01165
 Hopfner, John A01168
 Jackson, Mary Kay A01195
 Jordan, David S01226
 Kube-McDowell, Michael P. A02155
 Laskowski, Jr, George J. A02372
 Lockhart, M. L. A02289
 Lockhart, Mary Lu S01360
 Lusstryer, John G. A01387
 MacLaney, Thomas A01396
 Mattingly, Michael A02430
 McKana, Jr, John F. A02433
 McQuim, James A. A02219
 Meyer, Sanford A. A02376
 Newmark, Craig A. A01553
 O'Connell, Ann Marie A02228
 Overmeyer, James E. A01596
 Peel, Susan J. A01630
 Perkins, Jr, Frank A01641
 Pickell, David A02212
 Pickell, Lymc A02213
 Poup, Florence A. A01669
 Proni, Donna A01679
 Proni, Tullio A01680
 Prophet, Frederick A01681
 Schilling, Benjamin R. A01802
 Sieber, Renee A01838
 Sims, Patricia A01851
 Sims, Roger A01852
 Smart, Walter A. A02300
 Smith, Leslie H. A01866
 Spiegel, Samuel A02452
 Stein, David M. A01907
 Stein, Diana A01908
 Swenski, Joanne A02229
 Tons, Alex A01977
 Trend, Gregg T. A01987
 Tucker, Nancy J. A01994
 Tyym, Phd, Marshall B. A02307
 Walsh, Ray A02044
 Wicker, Guy S02089
 Young, Cecil L. A02131
 Young, George H. A02133



Missouri, USA (36)
 Andrews, Craig A00527
 Behms, Lynn P. S00582
 Burkhardt, Roy E. A02406
 Burnham, Ann A02312
 Cook, Glen A00765
 Dell, Charlie S00816
 Doms, Carol E. A00845
 Doms, Dennis A00846
 Duffield, William A00871
 Edwards, Nancy C. A00885
 Felkner, Chris H. A02314
 French, James R. A00980
 Govaker, David S01042
 Hathaway, Ross W. A01115
 Henry, Michael A. A01125
 Hranek, Catherine M. A02369
 Hranek, Robert J. A01172
 Kullman, Freda J. A02217
 Kullman, Thomas M. A02218
 LeHew, Laura S01330
 Lites, Darnell A01357
 Lowery, Carla A01374
 Medley, Cheryl A02374
 Metzger, Kathleen A02435
 Murray, James J. S01538
 Murray, Paula Helm S01539
 Novak, John J. A01567
 Phillips, Dannie L. A01649
 Platt, III, John J. A01658
 Smith, Cheryl A01863
 Spruell, Donald R. S01891
 Thompson, Kathleen K. A01965
 Willbrand, Marie A02223
 Zang, Linda C. A02136
 Zellich, Michelle A02141
 Zellich, Richard W. A02142

Mississippi, USA (3)
 Feller, Thomas R. A00928
 Shields, Ricky D. A01830
 Shields, Ruth M. A01831

Missouri, USA (36)
 Andrews, Craig A00527
 Behms, Lynn P. S00582
 Burkhardt, Roy E. A02406
 Burnham, Ann A02312
 Cook, Glen A00765
 Dell, Charlie S00816
 Doms, Carol E. A00845
 Doms, Dennis A00846
 Duffield, William A00871
 Edwards, Nancy C. A00885
 Felkner, Chris H. A02314
 French, James R. A00980
 Govaker, David S01042
 Hathaway, Ross W. A01115
 Henry, Michael A. A01125
 Hranek, Catherine M. A02369
 Hranek, Robert J. A01172
 Kullman, Freda J. A02217
 Kullman, Thomas M. A02218
 LeHew, Laura S01330
 Lites, Darnell A01357
 Lowery, Carla A01374
 Medley, Cheryl A02374
 Metzger, Kathleen A02435
 Murray, James J. S01538
 Murray, Paula Helm S01539
 Novak, John J. A01567
 Phillips, Dannie L. A01649
 Platt, III, John J. A01658
 Smith, Cheryl A01863
 Spruell, Donald R. S01891
 Thompson, Kathleen K. A01965
 Willbrand, Marie A02223
 Zang, Linda C. A02136
 Zellich, Michelle A02141
 Zellich, Richard W. A02142

Nebraska, USA (6)
 Bates, Karen A00573
 Day, John F. S00808
 Hansen, Mark C. A01094
 Pettinger, Sandy A01646
 Pettinger, Jr, Pierre E. A01647
 Smith, Randal F. A01870

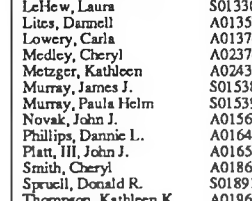
Stenstrom, Carol A02191
 Thornhill, Ira M. A01968
 Thornhill, Ripley S. A01970
 Verba, Joan Marie S02025



Mississippi, USA (3)
 Feller, Thomas R. A00928
 Shields, Ricky D. A01830
 Shields, Ruth M. A01831



Missouri, USA (36)
 Andrews, Craig A00527
 Behms, Lynn P. S00582
 Burkhardt, Roy E. A02406
 Burnham, Ann A02312
 Cook, Glen A00765
 Dell, Charlie S00816
 Doms, Carol E. A00845
 Doms, Dennis A00846
 Duffield, William A00871
 Edwards, Nancy C. A00885
 Felkner, Chris H. A02314
 French, James R. A00980
 Govaker, David S01042
 Hathaway, Ross W. A01115
 Henry, Michael A. A01125
 Hranek, Catherine M. A02369
 Hranek, Robert J. A01172
 Kullman, Freda J. A02217
 Kullman, Thomas M. A02218
 LeHew, Laura S01330
 Lites, Darnell A01357
 Lowery, Carla A01374
 Medley, Cheryl A02374
 Metzger, Kathleen A02435
 Murray, James J. S01538
 Murray, Paula Helm S01539
 Novak, John J. A01567
 Phillips, Dannie L. A01649
 Platt, III, John J. A01658
 Smith, Cheryl A01863
 Spruell, Donald R. S01891
 Thompson, Kathleen K. A01965
 Willbrand, Marie A02223
 Zang, Linda C. A02136
 Zellich, Michelle A02141
 Zellich, Richard W. A02142



Nebraska, USA (6)
 Bates, Karen A00573
 Day, John F. S00808
 Hansen, Mark C. A01094
 Pettinger, Sandy A01646
 Pettinger, Jr, Pierre E. A01647
 Smith, Randal F. A01870

MEMBERSHIP BY COUNTRY, PROVINCE OR STATE

List as of January 19, 1989



Nevada, USA (3)
Donato, Lou A02205
Donato, Myrna A02206
Reitz, Susan M. A01709

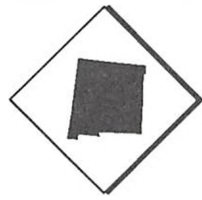


New Hampshire, USA (7)
Cannoy, Tamzen L. A00673
Lewis, Thomas P. S01341
Meskys, Edmund R. A01466
Parker, Sandra A01607
Smith, Kathryn L. S01864
Stone, Barbara A. S01926
Wiener, Robert K. S02091



New Jersey, USA (48)
Alexander, Iskandar R. S00512
Alexander, Wendy S00513
Bailey, Malinda A00553
Berlowitz, Paul J. A00593
Betancourt, John Gregory A00601
Bloom, Elaine A00614
Brown, Jacl S01197
Burley, Brian L. A00657
Copperthwait, Richard A00777
DeMarco, Thomas J. A00818
Divine, Charles J. A00841
Doroschenko, Leonid A00855
Eisenman, Richard A00888
Eisenman, Wanda A00889
Freeman, Barry C. A00981
Headley-Moriarty, Beverly A01116
Hepperle, Robert A01127
Hildebrandt, Kathleen A01140
Jaffe, Saul A01198
Jones, Lenore Jean A01222
Jones, Wayne H. S01224
Konoya, Hiroshi S01287
Krupp, Judy A02151
Krupp, Louisa A. A02152
Krupp, Rebecca A02153
Krupp, Roy S. A02154
Leeper, Evelyn C. A01328
Leeper, Mark R. A01329
Lindsay, Tamar A01355
Lundy, Donald H. S01381
Marshall, Katharine E. A01414
McCormack, J. C. A01442
Moriarty, Gerald A01515
Moriarty, Richard A01516
Mueller, James P. S01528
Nelson, Michael R. A01551
Ontell, Ron A01585
Ontell, Valerie Sussman A01586
Rogow, Roberta A01747
Staszak, Stephanie M. A01900
Toker, Susan A01975
Tomaino, Samuel J. A01976
Travis, David L. A01985
Trebing, Mark A01986
Weiner, Toni A. A02072
Weiss, Gail B. A02074

Wolansky, Taras S02113
Zelmanovics, Gary A02143



New Mexico, USA (9)
Bretney, Richard D. A00641
Dom, Betty S00853
Dom, Jr, MD, Ronald V. S00854
Keyser, Ralph S01262
Martin, George E. A01418
Martin, George R. R. A01419
Parris A01609
Peterson, Linda M. A01645
Williamson, Jack A02210



New York, USA (150)
Albasi, Gloria Lucia A00511
Anselm, Jo M. A00530
Asbomsen, Charles A00539
Asbomsen, Donna K. A00540
Atherton, Nancy A00542
Balazs, Frank S00556
Barnes, Pamela Susan A00562
Belton, Joanne A00583
Blackman, Mark L. A00610
Borovsky, Zina A00626
Botwin, Mitchell L. A00628
Breibart, 0 Guest of Seth A02393
Breibart, 1 Guest of Seth A02394
Breibart, 2 Guest of Seth A02395
Breibart, 3 Guest of Seth A02396
Breibart, 4 Guest of Seth A02397
Breibart, 5 Guest of Seth A02398
Breibart, 6 Guest of Seth A02399
Breibart, 7 Guest of Seth A02400
Breibart, 8 Guest of Seth A02401
Breibart, 9 Guest of Seth A02402
Breibart, Seth A00638
Brown, William A00652
Carlin, Loretta A00682
Casale, Jeanne A00691
Cohen, Eli S00743
Combs, Donald A00760
Connell, Byron P. A00761
Connell, Christine A00762
Coy, Eleanor A00779
Coy, Henry A00780
DC Comics, 1 Guest of A02176
DC Comics, 2 Guest of A02177
Davis, Kevin A00806
Dennis, John A00823
DiModica, Genevieve S00840
Dowewitz, Ira A00849
Douglas, John R. S00858
Dridge, Austin R. A00865
Eisen, Janice M. A02361
Eisenberg, Lisa A00887
Endrey, Thomas A. A00898
Engel, Jean S00900
Engel, Theodore H. S00901
Epstein, Louis A00903
Feder, Moshe A00925
Feuerstein, Michael J. S00935
Filipowicz, Catherine A. A00937
Finder, Jan Howard A00939
Fowler, Kitty S00967
Fox, Den A00969
Friedman, David A00987
Garley, W. Paul A00994
Gentili, Karl A01003
George, Marjorie A01004
Gerard, Ronald S01005
Gerstein, Linda S. S01011
Gonzalez, Jack A01038
Gonzalez, Jean A01039
Greene, Edward M. A01056
Griffith, Heather A01059

Griffith, Kurt E. A01060
Groves, Sheila A. A01067
Hager, Dana A01072
Hager, Jerry J. A01073
Hager, Kevin S. A01074
Hager, Shawn A01075
Hall, Joanne A01079
Hall, John A01080
Harris, Jonathan N. A01107
Harris, Susan E. A01108
Heck, Peter S01118
Helgeson, Marty A01119
Hellingner, Stuart C. A01120
Henry, Jr, Michael F. A01126
Heuer, Raymond E. S01135
Hoka, Sherlock A01156
Hudes, Dana S01174
Hurst, Jeffrey D. A02419
Jewell, Jane S01208
Kappesser, Peter J. S01237
Katz, Roger S01242
Kennedy, Peggy A01256
King, Trina E. A02318
Klein, Jay Kay A01276
Klinck, Karen M. A01277
Kritfcher, Arline E. A01292
Langsam, Devra Michele A01307
Lay, Toni A01318
Lazar, Judith Tockman S01320
Lichtenberg, Jacqueline A01343
Lichtenberg, Salomon A01344
Litt, Eilan Jane A01358
Lurie, Perianne S01386
Mainhardt, Ricia A01402
Mallinak, Douglas T. A01404
Marmor, Mark A01411
Maulucci, Mary K. S01432
Meltner, Kenneth J. A02375
Metz, Melissa A02156
Miller, Alan F. A01476
Minambres, Teresa Carmen A01484
Mueller, Mary Anne A01529
Muraskin, Elaine A01533
Olsen, Karl A01578
Otten, Mary A. A01595
Pinzow, Arne A01657
Porter, Andrew I. A01666
Potter, D. A01668
Price, Mary A. A01675
Provenzano, Leonard J. A01682
Pruitt, Timothy A. A01683
Pyne, Florence E. A01684
Rachlin, Alan S. A01686
Rasmussen, Geraldine A01696
Rasmussen, Karl A01697
Rosenberg, Robert A. A01756
Rosenfeld, Sue-Rae S01757
Rosenthal, Andrew R. A01758
Sachter, L. Ruth A01778
Sacks, Robert E. A01780
Schwartz, Julius A02337
Schweppe, Jane S01809
Scroggins, Phillip A01814
Segal, Judith Z. A02338
Segal, Richard A01816
Seligman, William A01817
Shane, Randall H. A01821
Shetron, Guest of Richard A01827
Shetron, Richard A01828
Simcich, Debra A01846
Simcich, Nicholas J. A01847
Strange, Judith M. A02455
Tesser, Gary C. A01958
Tibor, Stephen W. S01971
Timm, Donald A. A02457
Tober, Suzanne A01974
Toomi, Juri A01978
Trochia, Gregory A01989
Waldman, Jacob M. A02037
Wayne, Robert A02192
Weisskopf, Toni A01076
Werner, Elliot A02079
Williams, Perry M. A02100
Williams, Rondinella M. A02101
Willis, Dorothy A. A02102
Willis, Frances E. A02103
Winston, Joanie A02109
Woodin, Michael A02120
Yalow, Benjamin M. A02126



North Carolina, USA (5)
Denebeim, Jay A00819
Goldenberg, Simon S. S01034
Van Name, Mark L. A02017
Van Name, Mary Anne A02018
Vogel, Allyn K. A02028



Ohio, USA (66)
Alper, 1 Guest of Renee A02477
Alper, Renee Arwen A02476
Andrew, Doug A00526
Auerbach, Roy A00548
Ayotte, John A02494
Barter, Martha A. A00570
Berouzi, Tracy J. G. A00599
Bicking, Ruth Jane A02285
Carey, Douglas Scott A00678
Carey, Mary Picro A00679
Cavin, William I. A00710
Childers, Chad A00738
Clover, Rebecca Jo A02351
Coulson, Bruce A00786
Cross, Barbara J. A00810
DeBard, MD, Mark L. A00851
Dorcy, Stephanie A00904
Erichsen, Kurt A. S00909
Evans, Mark L. A01041
Goodwin, Jennifer A. A01066
Gross, PhD, Elizabeth L. A01097
Hardin, Barbara A01100
Harsh, Claudia E. A01124
Henry, Margaret E. A01130
Herrick, Steven A01136
Hickman, Carolyn A01137
Hickman, Lym A02179
Hilgartner, MD, C. Andrew A01141
Hillis, Robert L. A01144
Hilt, Margaret A. S01193
Jackson, Kathryn P. A00021
Kobec, Sally A. A01299
Lalor, R. Michael A02291
Metz, Rhodella A02292
Metz, Wesley E. A01491
Mitchell, Linda L. A01492
Mitchell, Mark G. A01496
Mitias, Betty Park A01531
Murnaw, Donnalyn A01532
Murnaw, Lorraine A. A01571
Oakes, Deborah A. A01584
Olynk, Frank A01600
Palmer, Dennis E. A01601
Palmer, Sharon A01615
Patrouch, Joseph A01702
Rearn, David K. A01713
Resnick, Carol L. A01714
Resnick, Michael D. A02190
Schmidt, Melvin C. A01807
Schwartz, Stephen P. A01840
Siegling, Carol Elaine A01841
Siegling, Evan Mills A01860
Sloan, John L. A01861
Sloan, Kathleen A. A00003
Smith, Laurence C. A00004
Spelman, Richard C. A02382
Swartzmiller, Lee A01953
Taylor, Sandra M. A01954
Taylor, Tommy G. A02016
Van Home, Thomas F. A02034
Vazquez, Emily A. A02475
Waldbauer, R. Nathaniel A02193
Young, Blanche A. A02194
Young, Chris A02134
Young, James M. A02195
Young, Kathy



Oklahoma, USA (18)
Behnke, James A00581
Bishop, Leonard R. S00608
Connolly, John C. A00763
Haldeman, Cynthia A02253
Harper, John A01101
Lackey, Anthony A01296
Lackey, Mercedes A01297
Lafferty, Raphael A. S01298
Lupton, Bormie A01383
Lupton, Robert A01384
Lupton, Robin A01385
McMahan, John E. A01453
Parrish, James G. S01610
Perkins, Philip Carl S01640
Sauer, Kurt F. S01795
Scott, C. T. A01811
Wallbank, Mary L. A02040
Wallbank, Tom A02041



Oregon, USA (15)
Andrews, John C. A00528
Christoffers, Karl K. S00716
Cross, Deborah A00787
Hunger, Jamie R. S01181
Johnson, K. I. S01214
Levine, David D. A01337
Lorentz, John A02290
Mohr, Susan C. S01500
Olson, Louise J. S01579
Olson, Shirley J. S01582
Owings, Carol Ann A01598
Ruudquist, William A. S01773
Trojan, Guest of William T. A01990
Trojan, William T. A01991
Wrigley, Paul M. A02467



Pennsylvania, USA (40)
Axler, David M. A00552
Billig, Debra L. A00603
Bilgen, Flonet A02197
Bisenieks, Dainis A00606
Bushyager, Linda E. A00662
Bushyager, II, Ronald R. A00663
Cecil, 1 Guest of Ann A02323
Cecil, Ann A00699
Dashoff, Joni Brill A00799
Dashoff, Todd A00800
Edeiken, Yale F. S00881
Feldbaum, Gary K. A00927
Fontecchio, Jr, Osvaldo A00961
Himmelsbach, Robert M. A01145
Hoffing, Janis A01151
Hood, Gwenyth E. A01167
Kernes, Mark A01260
Kidd, Virginia S01263
Lane, Charles A01303
Lane, Joyce A01304
Lundgren, Carl A01379
Lundgren, Michele A01380
Olanich, Catherine C. S01575

MEMBERSHIP BY COUNTRY, PROVINCE OR STATE

List as of January 19, 1989

Olmstead, Gene A01577
 Paul, Sara M. A01618
 Paulk, Mark A01620
 Riley, Kevin A02335
 Roelker, Stephanie J. A01743
 Sanderson, Sue E. A01787
 Schweitzer, Darrell A01808
 Shannon, Roxanna E. A01822
 Snyder, Raymond S01878
 Swanick, Michael John S01938
 Terry, Charlie A01956
 Warren, Kermet H. A02053
 Warren, Victoria A02055
 Weller, W. A. A02077
 Willis, Sheila A02105
 Wolkoff, Lewis H. A02114
 Wolkoff, Rose Anne A02115



Rhode Island, USA (4)
 Anderson, Susan E. A02311
 Baric, Walter A00561
 DeLaCruz, Dawne A00815
 Keller, Mark M. A02316



South Carolina, USA (2)
 Aaron, Sally E. A00501
 Steele, Mariann S. S01904



Tennessee, USA (22)
 Bolgeo, Richard T. A00622
 Giley, Ronnie A01017
 Goldstein, Deborah Kay A02277
 Gray, Larry Alan A01050
 Hollis, John A. R. A01161
 Holt, Melissa A01162
 James, Patricia A01201
 King, Anthony Scott A01267
 King, Jay A01269
 Koch, Irvin M. S01280
 Lynch, Nicki A01391
 Lynch, Richard W. A01393
 Moore, Ken S01508
 Norwood, Rick S01566
 Spurlock, Theresa M. A02380
 Stevens, Peggy A. S01922
 Townsend, Michael T. A01982
 Van Deest (Billings), Lee S. A02011
 Watkins, Jackie A02059
 Wauford, Melissa A02063
 Winberry, Ruth Ann A02108
 Young, Mary Ruth A02135



Texas, USA (75)
 Anderson, Elizabeth A00522
 Baldwin, John Thomas S00557
 Bogen, David Jon A00618
 Bogen, Karen Barker A00619
 Brandt, Richard S00636
 Brewer, Marsha A00642
 Burger, Joanne S00656
 Bushman, Patty F. A00661
 Butler, Charles W. A00665
 Coleman, Howard A00754
 Coleman, Janet M. A00755
 Cupp, Sandi S00781
 Cupp, Scott S00792
 Davis, Clifton A00805
 Davis, Paula E. S00807
 Decker, Elorie A00811
 Dimaggio, Joseph A00837
 Douglass, Cheri A00859
 Douglass, John A00860
 Ferguson, Bryan W. A00931
 Foster, Brad W. A02150
 Geraud, Barbara H. A01006
 Gimblet, Janet R. A01024
 Graham, Jr, Edward A. A01047
 Green, Jon B. A01053
 Green, Jr, Ralph A01054
 Greene, Lisa A01057
 Griffith, Brooks A01058
 Grimm, J. Michael A01062
 Harvia, Teddy A01113
 Hofstetter, Betty Joan S01154
 Inselberg, Lee Bradley A02370
 Jackson, John W. A01192
 Jackson, L. Jeanan A01194
 Jackson, Steven G. A01196
 Josseland, Earl S01230
 Kaden, Neil E. A01232
 Kimbriel, Katharine Eliska A01266
 Largent, Anthony A01308
 Laska, Alan David A01311
 Lawrence, Matt A01317
 Lee, Johnny M. A01326
 Lightsey, Floyd S01265
 McGrain, Tim S. A01448
 Merritt, Scott M. A01464
 Moore, John F. S01507
 Morin, Tom A01517
 Mueller, Pat A01530
 Pearson, Carl A01629
 Poe, Stephen D. A01660
 Poller, Martin A01661
 Pratt, Robert B. A01671
 Ross, Patricia A01760
 Ross, Wally A01761
 Sargent, Gene A01793
 Shelton, Gregory Mark S01825
 Siros, William W. A01857
 Sprinkle, G. K. A01890
 Stegali, Helen A01906
 Stembol, Karl A01912
 Stembol, Leif A01913
 Stephens, Monica A01914
 Sykes, Michelle M. A01939
 Tagrin, Darla Malone A01943
 Tagrin, Lawrence A01944
 Taylor, Robert R. A01952
 Virzi, Dennis A02027
 Ward, Judith S02049
 Ward, Lynn S02050
 Wexford, Marye Lynn A02080
 Williams, Gary D. A02098
 Williams, Judith L. A02099
 Wood, Edward A02117
 Wood, Jo Ann S02118
 Wood, Lawrence S02119



Utah, USA (5)
 Dakins, Mark A00794
 McArthur, Jeffrey A01438
 Miller, Pamela A01483
 Pope, Elizabeth D. S01665
 Torres, Dinah D. L. S01980



Virginia, USA (44)
 Ahsh, F. L. A00509
 Beach, Covert A02160
 Boneyk, Wayne C. A00623
 Brammer, Cecilia A00632
 Brammer, Eric A00633
 Brammer, Fred A00634
 Brandt, Beverly Louise A00635
 Brooks, Jr, Cuyler Warnell S00647
 Charette, Robert A00706
 Clark, Ivan A00722
 Clark, Susan M. P. A00724
 Coleman, Arthur W. A00753
 Cook, Jonathan C. A00766
 Cragg, Edward E. S00782
 Epperson, John M. A00902
 Fetheroff, Steven L. A00934
 Gerst, Deborah K. A01009
 Gerst, Jay L. A01010
 Gideon, Anne-Marie A01013
 Gideon, Randall A01014
 Gilliland, Alexis A. A01019
 Gilliland, Dolly A01020
 Gottlieb, Louis G. S01044
 Groenbaum, Gary M. A01055
 Guthrie, Julie J. A02252
 Hastie, David J. A01114
 Henderson, Arthur L. A01121
 Henderson, Rebecca R. A01122
 Johnson, Elizabeth N. A02240
 Kavaljian, Haig A01245
 Mallon, Jr, Fred W. A01405
 Napierkowski, Maria A02221
 Pomeranz, John A01662
 Preston, Janice D. A01672
 Preston, Richard K. A01673
 Schaad, Thomas S. S01798
 Smith, Tevis G. A01874
 Smith, Victoria A. A01876
 Stein, Michael P. A01909
 Strauss, Erwin S. A01928
 Van Dommelen, Erica A02013
 Veal, Edward Thomas A02024
 Ward, Charles D. S02046
 White, Phyllis A02083



Washington, USA (17)
 Clark, Beverley A00720
 Clifford, Robert J. A00734
 Clifford, Ruie Lue A00735
 Deneroff, Linda A00820
 Gallacci, Steven A. A02470
 Hinkley, Sandra Dee A02302
 Johnson, Ryan K. A01216

Kennedy, Eileen A01255
 Krolak, Jack P. A02329
 Marston, Bonnie S01415
 McFadden, Malinda A01447
 Nicholas, Larry A01555
 Raybin, Robert A. S01699
 Shipman, Linda A01833
 Thomson, Amy A01966
 Walls, Thomas A02042
 Zetterberg, Julie A. A02145



West Virginia, USA (8)
 Carpenter-Odbert, Betty A00684
 Hankamer, Jo A. A01091
 Hardebeck, John P. S01096
 Jordan, Bryan A01225
 Odbert, James A01573
 Turner, Sharon L. A02003
 Turner, II, Trubie L. A02004
 Turner, III, Trubie L. S02005



Wisconsin, USA (53)
 Blom, Sue Alles A00613
 Boettcher, Duke A00616
 Boettcher, Glen A. A00617
 Bogstad, Janice A00620
 Broszawic, Marcia A02225
 Cason, T. M. A00694
 Cosens, Vincent G. A00775
 Dancik, Ronald F. A00795
 DuCharme, Michael J. S00866
 Dutcher, Roger L. A02207
 Estkowski, Lilly A02245
 Farina, William A00916
 Fregni, Giovanna A00984
 Froelich, Barry A02362
 Froelich, Debbie A02363
 Gazdecki, Sandra A00999
 Gormoll, Jeanne A01037
 Greenberg, Guest of Martin G00016
 Greenberg, Martin Harry G00015
 Hannas, James R. A02254
 Harms, L. K. A01098
 Hinchliffe, C. Kay S00872
 Hoffman, Janet A01153
 Kaveny, Philip E. A01246
 Kiefer, Hope S01264
 Kimpel, Dale R. A02167
 Kimpel, Guest of Dale R. A02168
 King, Terri A01271
 Korhus, Louise J. A02424
 Lewis, Janet E. A02425
 Lowrey, Michael J. A01375
 Martin, Diane M. S01417
 Mildebrandt, Nancy E. A01473
 Moertl, Elaine A02246
 O'Dell, Steven A02247
 Parsons, Patricia A01611
 Pauli, Karen A01619
 Prince, Mary S. A02333
 Riedel, Barbara P. A01719
 Rittenhouse, Deirdre M. A01727
 Rittenhouse, James A01728
 Roberts, Marjorie A02174
 Rogge, Rebekah A01746
 Russell, Richard S. A01772
 Smith, Nevenah A01869
 Spiess, Laura A01888
 Stopa, Jon G00017
 Stopa, Joni G00018
 Uchitil, Darryl E. A02260
 Voros, Judy A02031
 Voros, Todd A02032
 Weissinger, Robert A02075
 Wood, Greg R. A02466



Wyoming, USA (2)
 Edmunds, Barbara A00885
 Lang, David T. A01306



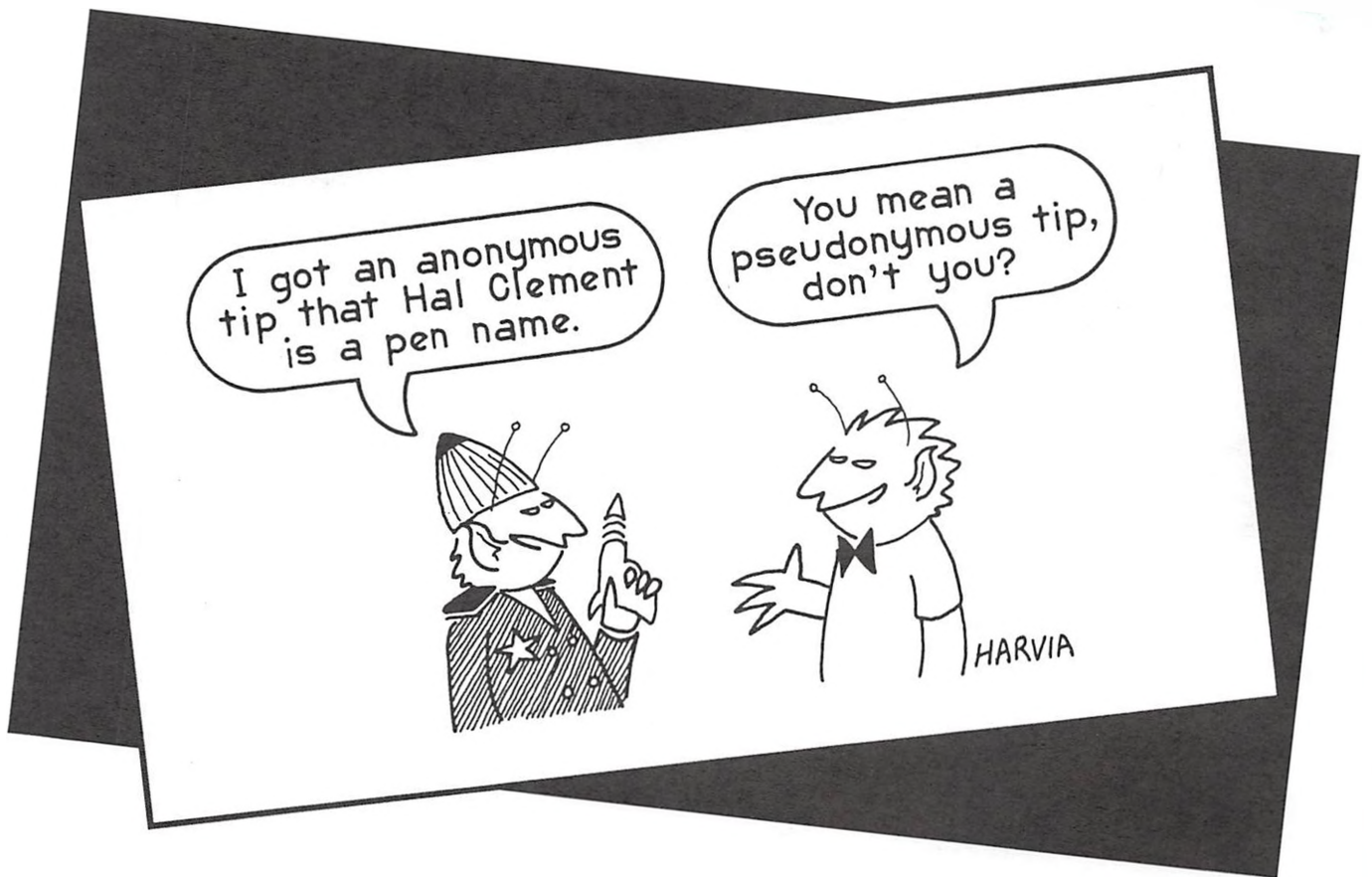
West Germany (3)
 Alex, Manfred S02468
 Mainz, Frank A02331
 Recktenwald, Thomas A02334



Yugoslavia (3)
 Coklin, Damir A00748
 Djokic, Darije S00843
 Mazuranic, Krsto A. A01346

Total Membership Thru January 19 1989

Supporting—283 Attending—1657



Art credits for PR#1: Front Cover, p. 2, p. 7, p. 8 - Todd Hamilton
Back Cover - Teddy Harvia

Chicon V

The 49th World Science Fiction Convention
P.O. Box 218121
Upper Arlington, Ohio 43221-8121

U.S. Postage Paid
Bulk Rate
Permit 1951
Columbus, Ohio

A01580 {{Mark Olson}} V 880904
Mark Olson
Ten Shawmut Terrace
Framingham, MA 01701- USA